

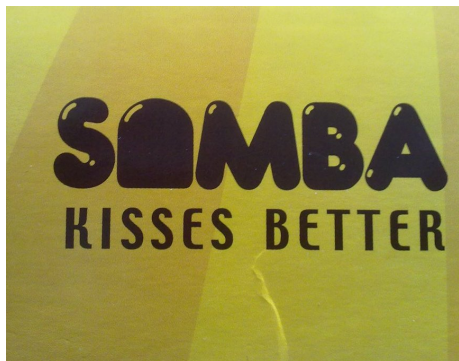
Samba 4.0:
Open Source Active Directory Services On The Horizon

CeBIT Open Source Forum 2012

Michael Adam (ma@sernet.de)

SerNet / Samba Team

2012-03-07



- ▶ since 1992
- ▶ *The Open Source* SMB/CIFS/SMB2 file server
- ▶ <http://www.samba.org/>
- ▶ production proven and reliable
- ▶ performance, scalability
- ▶ used in many products/appliances
- ▶ some 15 – 20 active core developers
- ▶ two development streams: Samba3 / Samba4

about:SerNet

- ▶ OpenSource/Linux centric company in Germany
- ▶ founded 1996
- ▶ today: 40-50 employees
- ▶ Samba department: 5 Samba core team members including the release manager
- ▶ Samba development and consulting as a service
- ▶ sambaXP : annual samba developer and user conference



Samba3

- ▶ stable release, found in the Linux distributions
- ▶ current: 3.6.3
- ▶ file server (smbd)
- ▶ all-active clustering with CTDB
- ▶ windows AD domain member (winbindd)
- ▶ windows NT (like) domain controller
- ▶ some 10+ active developers
- ▶ currently: SMB2: 2.0, 2.1, 2.2 (Windows 8)

Samba4

- ▶ development since 2003/2004 (release of Samba 3.0.0)
- ▶ started as complete rewrite
- ▶ original target: scale-out-clustering (now in samba3)
- ▶ target: Active Directory domain controller
- ▶ current: alpha 18
- ▶ some 5 – 10 active developers

Samba 4.0 ... this year?



- ▶ Some features of AD are "ready"
- ▶ Some others are not.... 😊
- ▶ 4.0 will be the successor of 3.X
- ▶ ⇒ file server should work like Samba3's `smbd`

The Franky-Idea



source: *Wikimedia Commons*

- ▶ mid 2008:
- ▶ use the best of both worlds
 - ▶ ad-server of Samba4
 - ▶ smbd of Samba3
 - ▶ rpc-services mix both worlds
- ▶ and stitch them together...

- ▶ Combined Code base: source3/ and source4/
- ▶ more and more commonly used libraries and subsystems (tdb, talloc, tevent, pidl, librpc (parts), cldap, ...)
- ▶ integration of smbd with samba (s3fs)
- ▶ DNS: started internal DNS server (for ease of use)
mature integration with bind 9.8.1

What Does Already Work?

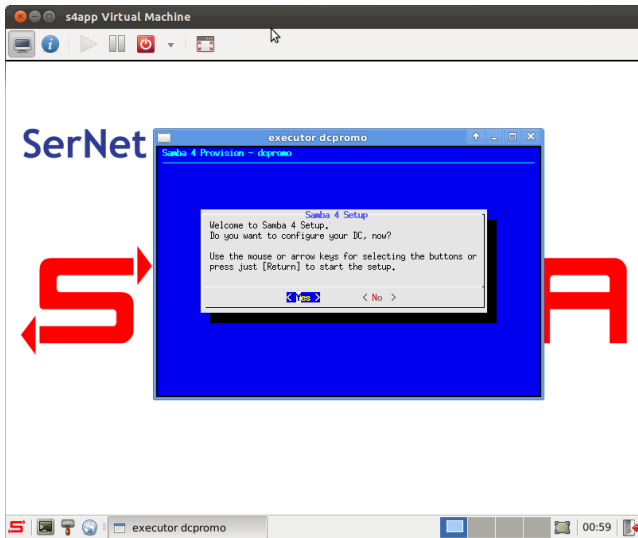
- ▶ single domain single DC
- ▶ multiple DCs with some hacks (FS replication)
- ▶ joining workstations, automatic dns updates
- ▶ management with Windows-tools (mmc, active directory users and computers, ...)
- ▶ group policies (management via mmc)
- ▶ schema extensions: e.g. Zарафа-integration (open source group ware)



Yin Yang

SerNet Samba4 Appliance

- ▶ Samba4 AD/DC
- ▶ ease pre-release-testing
- ▶ soon : <http://www.enterprisesamba.org/vm-images> (+ installation-iso)



Questions? ⇒ E55

